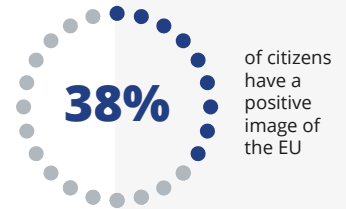
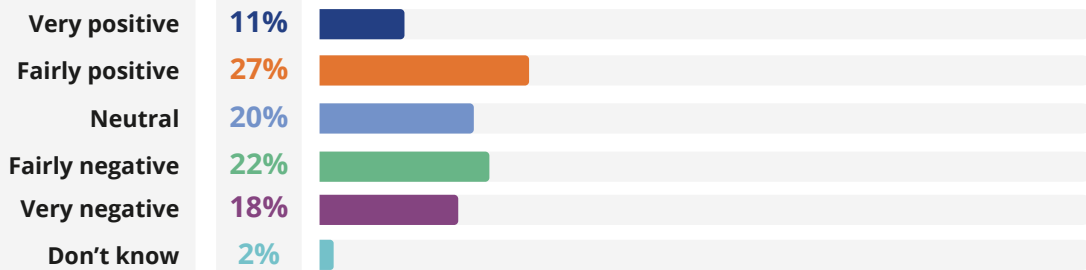


ANNUAL SURVEY 2025 - SERBIA

PERCEPTIONS TOWARDS THE EUROPEAN UNION

These findings are part of the independent Western Balkans regional opinion poll,
Spring 2025, WeBalkans programme.

Attitudes towards the EU



Top three factors citizens say would make them more positively disposed towards the EU

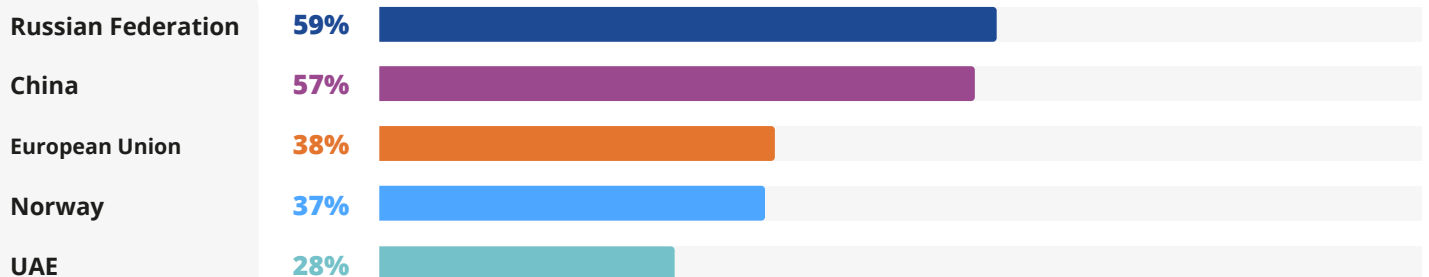


Top three areas where citizens say the EU should play a greater role in supporting Serbia



Trust towards the EU, countries and international institutions

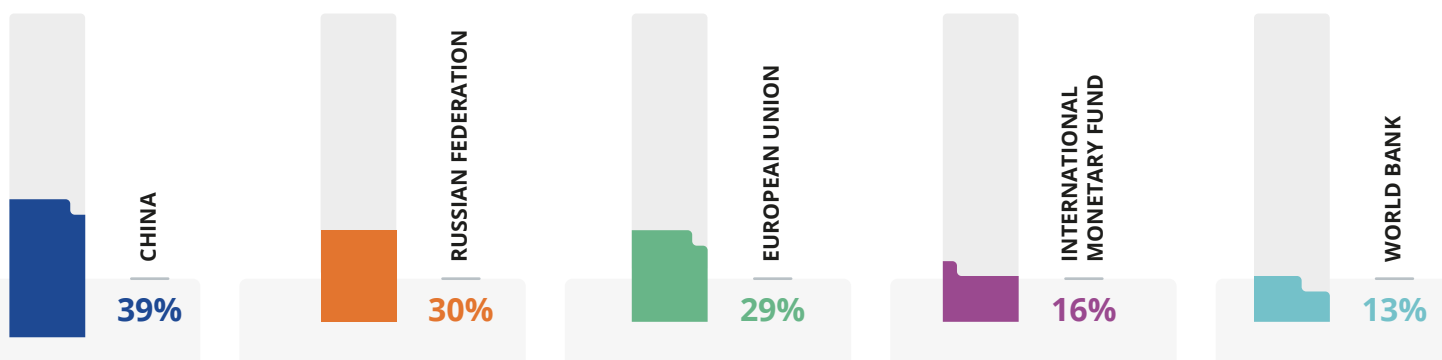
TEND TO TRUST



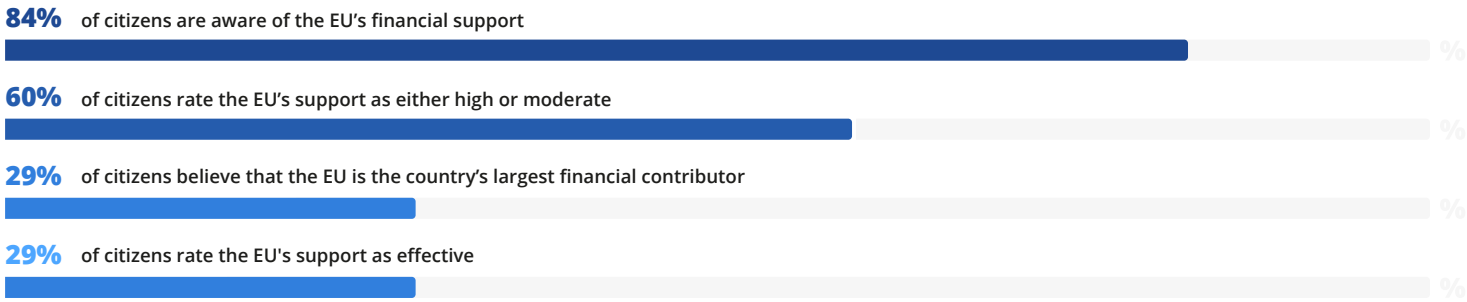
Perception of support from international donors

Percentage of citizens who rate the support as high or very high

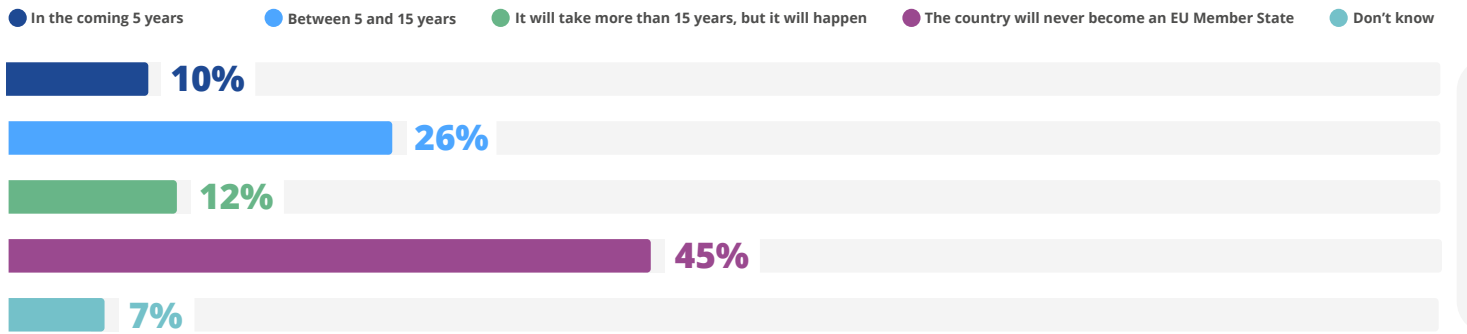
Respondents were asked to rate the financial support from very high to very low/none



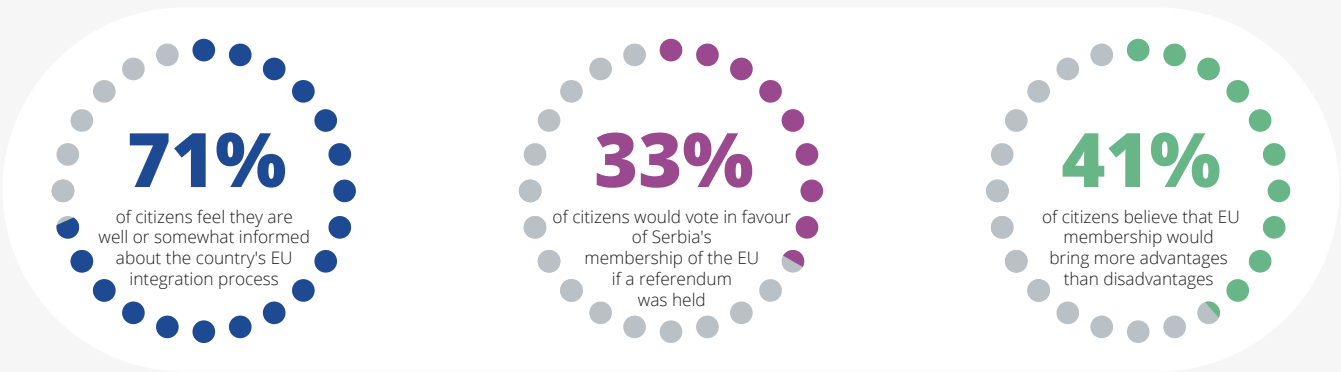
EU financial support to Serbia



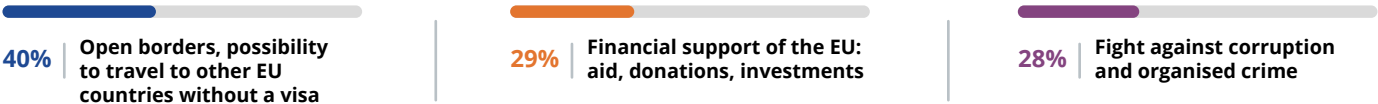
I think Serbia will become an EU Member State...



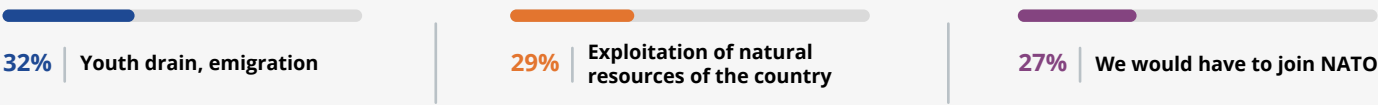
Citizens' views on EU accession



Perceived main benefits of EU membership



Perceived main concerns of EU membership



Perceived main obstacles to the accession

